



# CORPORATE PROFILE

## 2026 EDITION



**S**ince 1994, we have been committed to providing tailored solutions for all your automation and access-control needs, backed by professional guidance.

We support you through every stage of your project—from the initial design to final commissioning, and later through our dedicated after-sales service.

Accesos Automáticos is part of a business group with more than 28 years of proven success in automation and management systems, offering solutions for **Automatic Doors, Gates, Barrier Systems, Access Control, Industrial Equipment, and more.**



Our team of professionals delivers optimal solutions aligned with the highest standards of construction, safety, and efficiency in the field of automation and access management.

We support globally recognized leading brands. Our Quality Management System reinforces our commitment to the quality and efficiency of our products and services.



**Bandera Azul Ecológica**  
COSTA RICA / CAMBIO CLIMÁTICO

# OUR GROUP



**Costa Rica**



Un viaje hacia la excelencia y sostenibilidad financiera



**Panama**



Un viaje hacia la excelencia y sostenibilidad financiera



**Guatemala**



Un viaje hacia la excelencia y sostenibilidad financiera





**A**ccesos Automáticos brings together a team of 256 collaborators, distributed across over our offices in each country.

We are also organized into BUSINESS UNITS, enabling technical specialization and ensuring compliance with quality management and effectiveness processes.

- TECHNICIANS
- SUPERVISION & ENGINEERING
- SALES ADVISORS
- AFTER - SALES ADVISORS
- OPERATIONS & QUALITY CONTROL

# Our Footprint in Central America



**COSTA RICA**



**PANAMA**



**GUATEMALA**



**HONDURAS**



**EL SALVADOR**



**DOMINICAN REPUBLIC**

# OUR DNA



## RELATIONSHIPS

We build relationships through timely and transparent communication.



## LEADERSHIP

We inspire leadership within our teams.



## EXCELLENCE

We make quality a habit, exceeding expectations in every detail.



## SIMPLICITY

We simplify things to deliver fast and efficient solutions.



## RESPONSIBILITY

We fulfill our commitments with dedication and respect, strengthening trust through consistent and committed actions.

“ To provide high-quality vehicular and pedestrian access solutions in an efficient manner, fully complying with regulatory requirements and client agreements. We achieve this proactively by continuously improving customer satisfaction, systematically measuring our activities, preventing pollution, and promoting occupational health and safety for our employees and external stakeholders. ”





# OUR SERVICES



Contact Us

[www.accesosautomaticos.com](http://www.accesosautomaticos.com)



# Technical Service



# Projects



# Maintenance Contracts

# Service Center





# Parking Systems

# PKX:

**Automatic Payment Station:**

Capable of managing any type of payment while simultaneously serving as an information point, assistance station, advertising display, and personalized product and service sales point, thanks to features such as its 23.8-inch portrait-format screen.

It remains fully compatible with the most advanced version of our PMS LINCÉ 7, allowing full configuration of all types of payments—from traditional transactions based on a physical ticket to ticketless scenarios using license plate payment directly from the ATM (virtual ticket).

**Entry-Exit Terminal:**

Designed to operate continuously with minimal maintenance.

Its compatibility with the most advanced version of our PMS LINCÉ 7 allows full configuration of any operating mode, from traditional ticket-issuing systems to dynamic entry and exit scenarios — ticketless and free-flow.

# Kiosk:

Versatile payment methods: Accepts credit card payments.

Offers QR code reading and RFID card detection for subscriber control.

# Success Stories:



**CAME  PARKARE**



Automatic Payment Station

Entry Terminal



Exit Terminal



# PKX

Multifunctional Kiosk





# Automatic Doors

**Automatic Sliding Doors**



**Automatic Folding Doors**



**Cleanroom Sliding Doors**



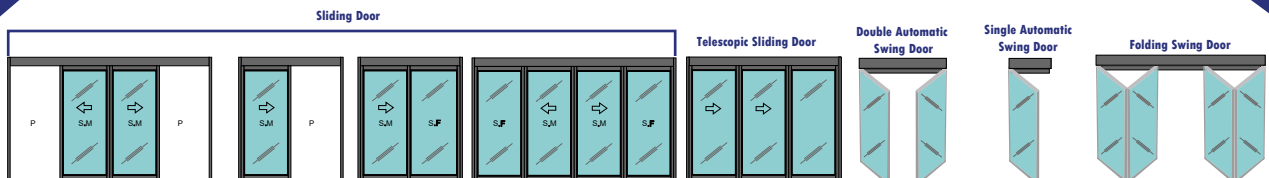
**Automatic Swing Doors**



**UL120-Certified Fire-Rated Doors**



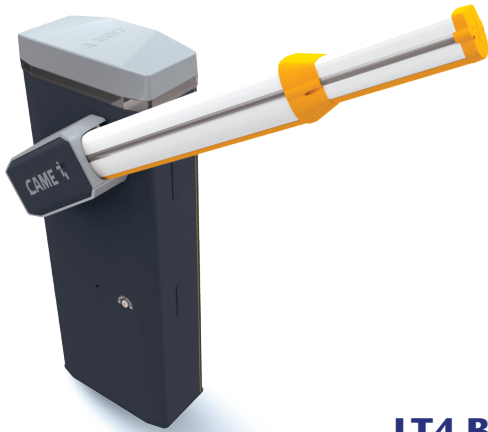
**Security Interlock Door**



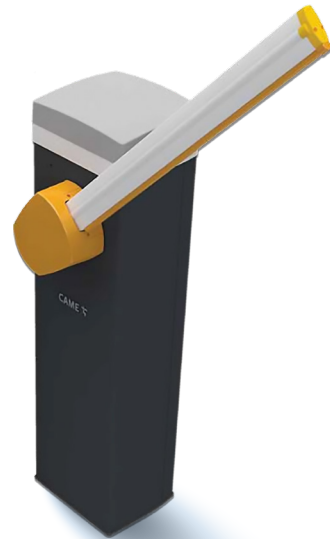


# Automatic Barriers

**Gard GT8 Barrier**



**Gard GT4 Barrier**



**LT4 Barrier**



**CAME** 



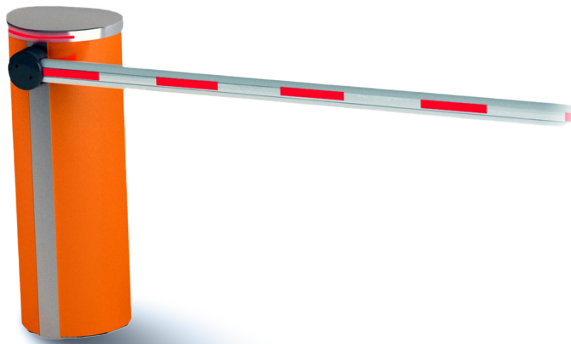
**BL229 Barrier**



**Magnetic Barrier**



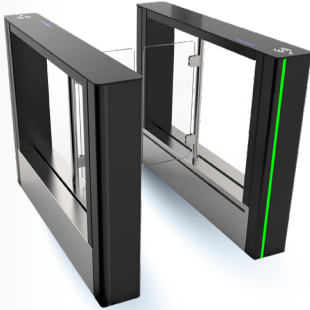
**BL15 Barrier**



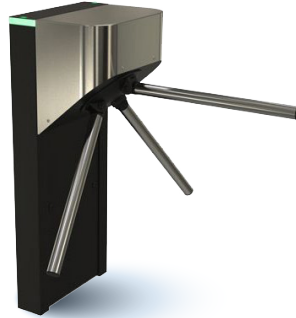


# Pedestrian Access Control

**Speed Gates**



**Waist-High Turnstiles**



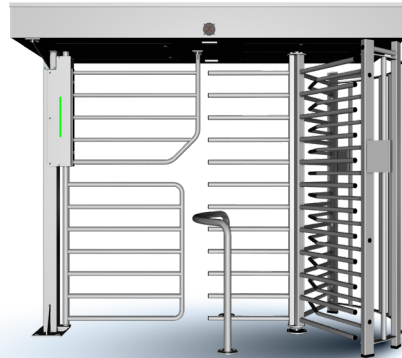
**Biometric Access Control**



**Metal Detectors**



**Full-Height Turnstiles**



**ASI** AUTOMATIC SYSTEMS

**RANGER**™ SECURITY DETECTORS

Control iD



# Access Automation

**End-to-End**  
for  
Residential &  
Condominium  
Complexes

**Automatic Barriers**



**Intercom Systems**



**Access Control**



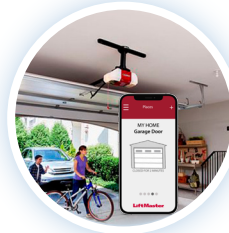
**Remote Control**



**Automatic  
Gates**



**MyQ Smart  
Access**



**Sectional Garage  
Doors**



# Vehicle Access Control

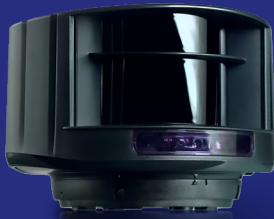
**UHF Windshield Tag**



**Bollards**



**Laser Presence Sensors**



**Long-Range Antenna**





# Industrial Equipment

# Rolling Doors

**UL Certification  
in Rolling Doors  
& Operators**

**Steel Rolling Doors**



**Fire-Rated Rolling Doors**



**High-Speed Doors**



**Loading Dock Equipment**



**Industrial Rolling Door Operator**

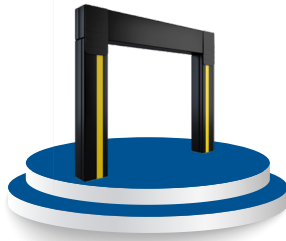


# Dock Equipment

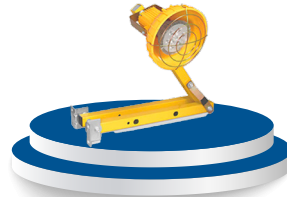
We offer the most complete line of Dock Equipment for logistics operations, focused on maximizing loading and unloading efficiency. Our solutions include:

- Dock Lights**
- Dock Signaling**
- Vehicle Restraints**
- Dock Bumpers**
- Dock Seals**
- Sectional Doors**
- Dock Levelers**

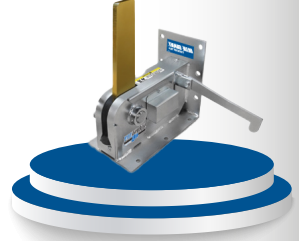
**Dock Seals**



**Dock Lights**



**Vehicle Restraints**



**Dock Signaling**



**Dock Leveler**

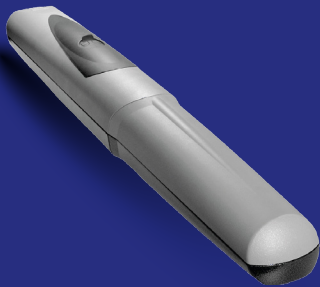




# Gate Automation Solutions

# Sliding & Swing Gate Manufacturing

**Axo 5024 Actuator**



**Industrial Rack Drive Operators**



**High-Traffic Sliding Gate Operator**



**High-Traffic Swing Gate Operators**



**Industrial Gates**



**CAME**  **LiftMaster**

**BENINCA**  
GROUP

**CAB**<sup>®</sup>  
MORE THAN AUTOMATION



**800**

Customized

*Maintenance Service*

**SERIES**

**HOMAX**

Portones de Lujo & Automatización

[www.accesosautomaticos.com](http://www.accesosautomaticos.com)





# Maintenance Service

### FREQUENCY

Maintenance is carried out according to the manufacturer's recommendations or as required by the client.

The established schedules provide control and consistency in every execution.

### PREVENTIVE & CORRECTIVE

Our Preventive Program allows us to extend the useful life of the equipment and ensure optimal performance.

We also provide corrective maintenance for major interventions when required.

### MAINTENANCE PLAN DEVELOPMENT

Maintenance plans are designed based on the equipment installed at the company, ensuring that each plan is tailored to the client's specific requirements.

### MAINTENANCE CONTRACT

Once the maintenance plan has been defined, a contract will be issued outlining the terms and conditions agreed upon by both parties.

# Quality Management Policy

“ We are committed to providing high-quality vehicular and pedestrian access solutions in an efficient manner, ensuring compliance with all regulatory requirements and client specifications.

We achieve this through proactive management, the continual improvement of customer satisfaction, the systematic measurement of our processes, the prevention of environmental contamination, and the promotion of occupational health and safety for our employees and all relevant external stakeholders. ”



# VALUE ENGINEERING IN YOUR PROJECTS



Sectional  
Doors



Automatic  
Doors



Rolling  
Doors



Gates



Automatic  
Barriers



Access  
Control



Loading Docks



Fire-Rated  
Rolling Doors

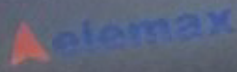


[info@accesos.co.cr](mailto:info@accesos.co.cr)



**(506) 7103 - 3135**

**(506) 2227 - 0909**





**elemax**